



ASKARI
GAME LODGE & SPA

Conference Portfolio
2021





Welcome

Askari Game Lodge & Spa is situated on the Plumari Private Game Reserve in Magaliesburg. Just an hour from Johannesburg or Pretoria, Askari offers guests a memorable Big 5 wildlife experience within a malaria free environment.

Askari Game Lodge & Spa caters for meetings, conferences, teambuilding initiatives and training courses in both the Main Lodge and Day Visitors Centre. Spa relaxation is available to conference delegates after or during a day of meetings.

"While frequenting Askari and hosting a national conference, we could not have asked for much more" Michelev892 from Midrand describes her conference experience on Tripadvisor, "from the reception, function, meals and every staff member encountered, we couldn't have asked for more. The staff were exemplary. Can't wait to come again."

Plumari Private Game Reserve is set within a pristine wilderness area of 6800 hectares with natural African bushveld and an abundance of flora, fauna, birdlife and wildlife. Game drives and elephant experiences are scheduled daily to make your conference unforgettable.

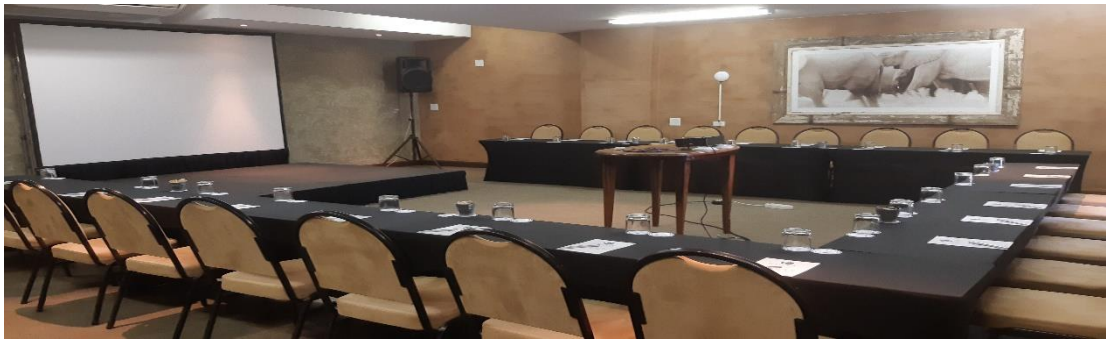
The Main Lodge, which is in fact the old Bodenstein family farmhouse, overlooks the Elephant Dam and invites guests to take a step back in time whilst admiring South African décor pieces dating back to the 1800's. Slipper baths, a coal stove, wash stands, luggage chests, antique Oregon cupboards and tables are subtly placed within the four-star surrounding, to emphasize the captivating history of the Magaliesberg area.

Askari Game Lodge & Spa has one of the largest private collection of ox wagons, carts and other animal drawn vehicles from the period 1800 – 1900. A variety of items from the SA War and San Bushmen rock carvings tell the history of the area, which is also known for the Battle of Nooitgedacht. Examples are available in the Museum, which is also a popular venue for functions, pre-dinner drinks or teambuilding.

The Day Visitors Centre is abundant with African symbology, rich earthy colours and unique African décor focal points. All conference rooms are in the Day Visitors Centre and afford great views of the Magaliesberg mountain range and reserve.

We look forward to hosting you and your team.

Management & Staff
ASKARI GAME LODGE & SPA



Conference Tariffs

Day Conference Package:

R850 per person per day

- Tea & Coffee on Arrival
- Mid-morning and/or Afternoon tea, coffee & Chef's selection of Snacks
- Lunch
- Conference Venue
- Standard Equipment including a Data Projector

24-Hour Conference Package:

R2500 per person sharing

R3450 single occupancy

- Tea & Coffee on Arrival
- Mid-morning and/or Afternoon tea, coffee & Chef's selection of Snacks
- Lunch
- Dinner
- Accommodation
- Breakfast
- Conference Venue
- Standard Equipment including a Data Projector

ALL RATES ARE VALID UNTIL 30TH SEPTEMBER 2021 AND ARE SUBJECT TO CHANGE

Conference Special

- "Sunday Night Blues" – starting your conference on a Monday morning? Stay over on the Sunday night free and pay only for meals (Ts & Cs apply).

Venue Capacity

Room Name	Seating Capacity			Room Dimensions		Area m ²
	U- Shape	School Room	Theatre	Length (m)	Width (m)	
AKIRA	80	150	180	20.4	12.8	261.1
AKIRA CAN BE SUBDIVIDED INTO THREE VENUES DEPENDING ON REQUIREMENTS						
AKIRA 1	30	40	60	6.8	12.8	87
AKIRA 2	30	40	60	6.8	12.8	87
AKIRA 3	30	40	60	6.8	12.8	87
AMIRI	10	16	20	4.8	8.6	41.3
FIKIRA	20	30	50	7	8.6	60.2
HAKIMA	20	30	50	7	8.6	60.2

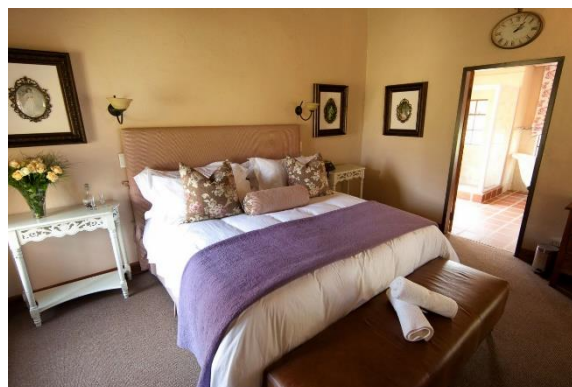


Accommodation



STANDARD ROOM

*Smallest of our rooms overlooking the dam
King size bed, TV, aircon, bath tub, shower,
basin & toilet*



DELUXE ROOM

*Most of these 45m² overlook the dam
and some can split into 2x¾ beds, TV,
aircon, bath tub, shower, basin & toilet*



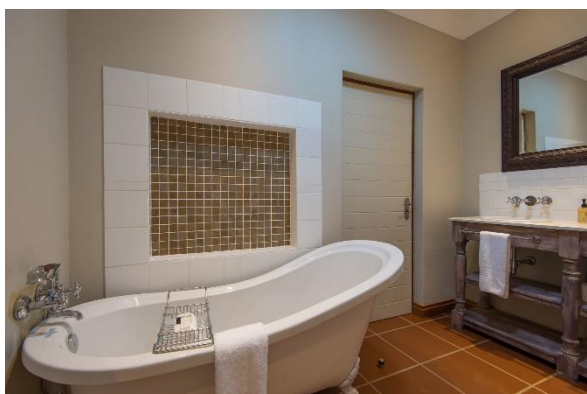
GARDEN COTTAGE

*2 Units, each with 3 bedrooms – ideal for families.
King size beds, TV, aircon, bath tub, shower, basin
& toilet*



EXECUTIVE ROOM

*35m² rooms, stand alone units closest to the Main Lodge,
overlooking the pool and dam. TV, aircon, King size beds,
bath tub, shower, basin & toilet*



GARDEN SUITE: *Split into two rooms (A & B) each with their own bathroom (A has a shower only & B has a shower & bath), King Size beds, TV, aircon, basin & toilet*





Wildlife Conference Experience

Activities	Time		Duration	Rates Pp
Game Drives	Mornings: Summer: 06h30 / 09h30	Afternoons: Summer: 16h00	2.5h	R 425
	Winter: 09h30	Winter: 15h00		
Elephant Experience	On request	On request	1.5h	R750
Petroglyph Hike	On request	On request	2h	R350
Mountain Hike	On request	On request	3h	R450
Bush Skills course		On request	2-2.5h	R650

Directions

From OR Tambo International Airport (Johannesburg - approx. 1 hr 30 min)

Follow the signs to Johannesburg until you come to an interchange with the N1 Highway. Follow the N1 North/Roodepoort or N1 Pretoria signs.

Follow this to Roodepoort (pass Sandton on the left) and take the 14th Avenue off-ramp (see Sandton below)

From Sandton/Fourways

Travel North on Rivonia Road or William Nicol Highway, until you reach the N1.

Turn left towards Roodepoort. Continue to the 14th Avenue off-ramp and turn right into 14th Avenue (underneath the highway).

Turn right at the next intersection on to Hendrik Potgieter Drive, heading towards Krugersdorp. Do not turn off this road, continue to the T-junction (Krugersdorp left and Hekpoort right – a Zenex garage will be across the road and to the right).

Turn right at this T-Junction onto the R563 towards Hekpoort – it is important that you keep in the right hand lane (do not take the N14 road to the left).

Continue straight through farmlands and scenic hills to another T-junction, then turn left on to the R560. After about 8km, turn right on to the Doornhoek Road.

Keep going until you reach the security gate at the entrance to Plumari Game Reserve.

Please do not exceed 40km/hour and watch out for wild animals crossing. Stay in your vehicle and do not leave the main tar road. Askari Lodge is 6kms from the T-Junction.

From Randburg

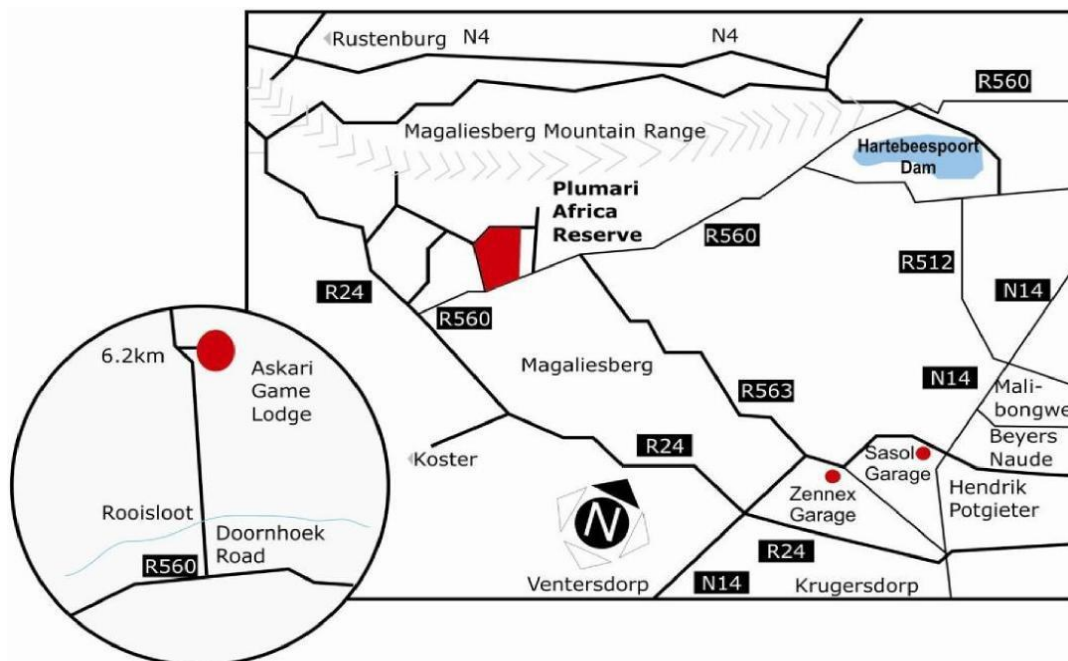
Travel out of Randburg on Malibongwe Drive (R512) and cross over the N14 highway. Stay on this road until the T-Junction in Broederstroom and turn left. Continue straight (you will pass Pecanwood Golf Estate) until you come to another T-junction. Here you will turn left on to the R560 and travel through the village of Skeerpoort. Stay on the R560 for approximately 28km and turn right on to the Doornhoek Road. Keep going until you reach the security gate at the entrance to Plumari Game Reserve. Please do not exceed 40km/hour and watch out for wild animals crossing. Stay in your vehicle and do not leave the main tar road. Askari Lodge is about 6km from the T-junction.

From Pretoria Central (approx. 80km – 1 hr 15 min from Loftus Versfeld)

Travel out of Pretoria on Struben Road towards Pelindaba. Go through Pelindaba Tollgate. The highway ends just after the tollgate. At the end of the highway off-ramp, turn left. At the T-junction, turn right (R104) towards Broederstroom. Stay on the R512 past Broederstroom and continue past Pecanwood Golf Estate to the next T-junction. Here you will turn left on to the R560 and travel through the village of Skeerpoort. Stay on the R560 for approximately 28km and turn right on to the Doornhoek Road. Keep going until you reach the security gate at the entrance to Plumari Game Reserve. Please do not exceed 40km/hour and watch out for wild animals crossing. Stay in your vehicle and do not leave the main tar road. Askari Lodge is about 6km from the T-junction.

From Centurion

Travel South from Centurion on the N14. Take the Diepsloot/Fourways R511 turn off. Turn left towards Erasmia. Travel for 2.6km and turn left on to the R511 towards Hennops. Continue until the 4 way stop. Here you will turn left (R104) towards Broederstroom. Stay on the R512 past Broederstroom and past Pecanwood Golf Estate until you come to a T-junction. Here you will turn left on to the R560 and travel through the village of Skeerpoort. Stay on the R560 for approximately 28km and turn right on to the Doornhoek Road. Keep going until you reach the security gate at the entrance to Plumari Game Reserve. Please do not exceed 40km/hour and watch out for wild animals crossing. Stay in your vehicle and do not leave the main tar road. Askari Lodge is about 6km from the T-junction.



ASKARI GAME LODGE

R560, 1 Doornspruit Road, Magaliesburg, 1791

014-577 2658 / 082 416 1340

conference@askarilodge.co.za www.askarilodge.co.za